

IS REALLY ADAPTATION GIVES WELL EFFECT AT THE FARM LEVEL?

**PAPER PRESENTED ON NATIONAL RESEARCH CONFERENCE ON CLIMATE
CHANGE, INDIAN INSTITUTE OF TECHNOLOGY, DELHI FROM
NOVEMBER 5-6,2011**

**PRESENTED BY
SUJATA MAJUMDAR
JUNIOR RESEARCH FELLOW
RURAL DEVELOPMENT CENTRE
INDIAN INSTITUTE OF TECHNOLOGY,
KHARAGPUR**

INTRODUCTION

This study has taken to determine the adaptation is helpful or not to the poor farmers who are suffering for climate change and so adapted new cultivation practice

Here two villages Pullian and Nepura of districts in West Bengal as Howrah and Paschim Medinipur respectively have been chosen.

Objectives:

- 1. To determine the cost before and after adaptation**
- 2. To determine the changes in farm business income, family labour income and net income before and after adaptation**

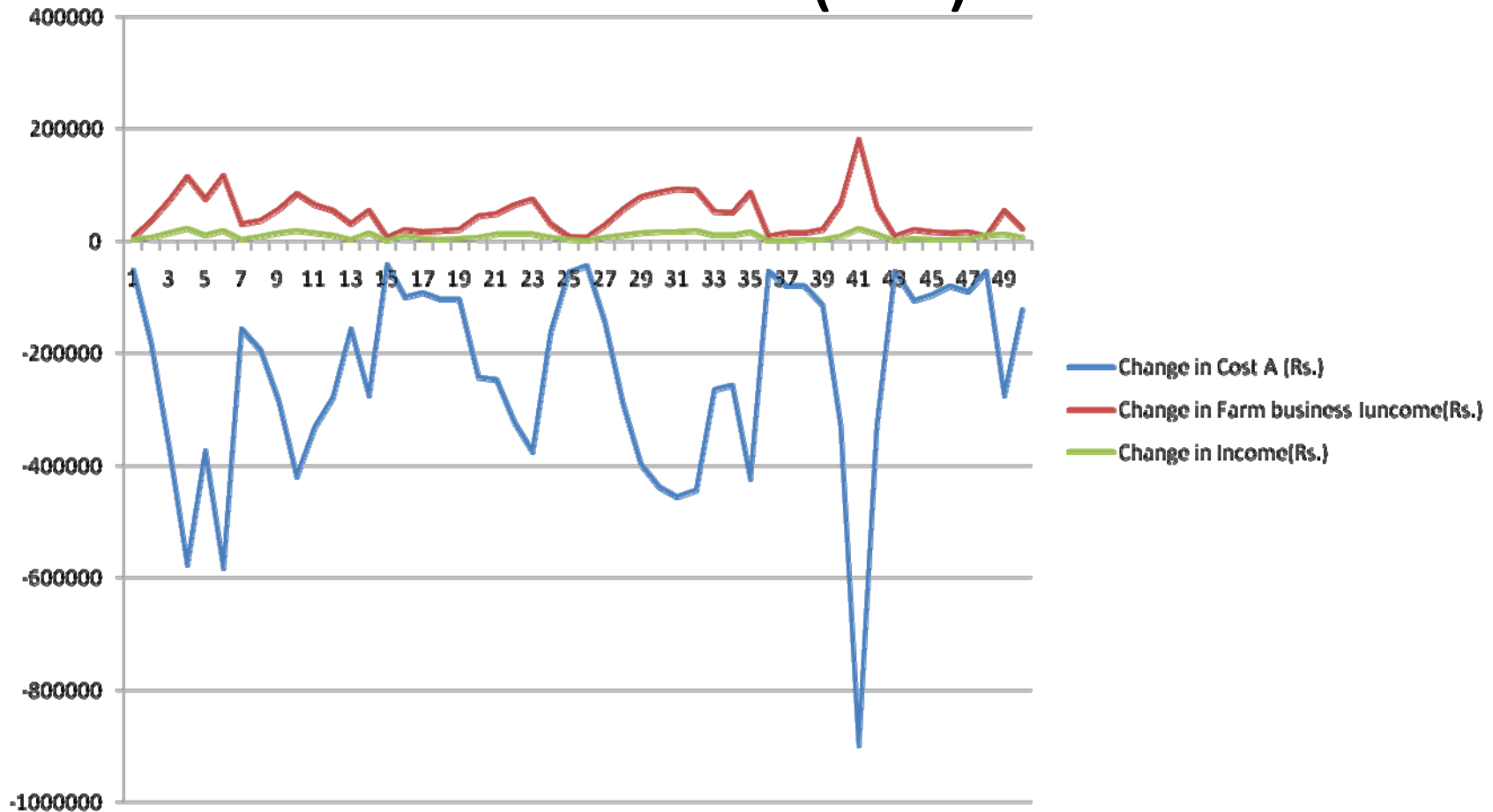
Cost of cultivation

- 1. 93.31 percent Cost A, 25.62 percent Cost B and 67.81 percent Cost C decreased.**
- 2 . It has clearly seen that farm business income increases 102.40 percent, farm labour income increases 102.62 percent and net income increases 68.34 percent respectively.**

Due to climate change the direct cost and indirect cost has been higher than after adaptation cost.

In the model only consider the changes of gross income, variable cost and the farm business income as these are highly fluctuated.

Diagram of Changes of Direct cost , Farm Business Income and Income(Rs.)



The model has been shown the value of R square = 0.83. This model has chosen by linear regression method in the confidence level of 5%.

Here the results has shows the family labour and farm business income become higher but net income increases but it is still negative. So adaptation is essential but not still sufficient.

Thank you