

# UMIAM SUB-WATERSHED REDD+ PROJECT, MEGHALAYA, INDIA





# East Khasi Hills Community Conservation Area



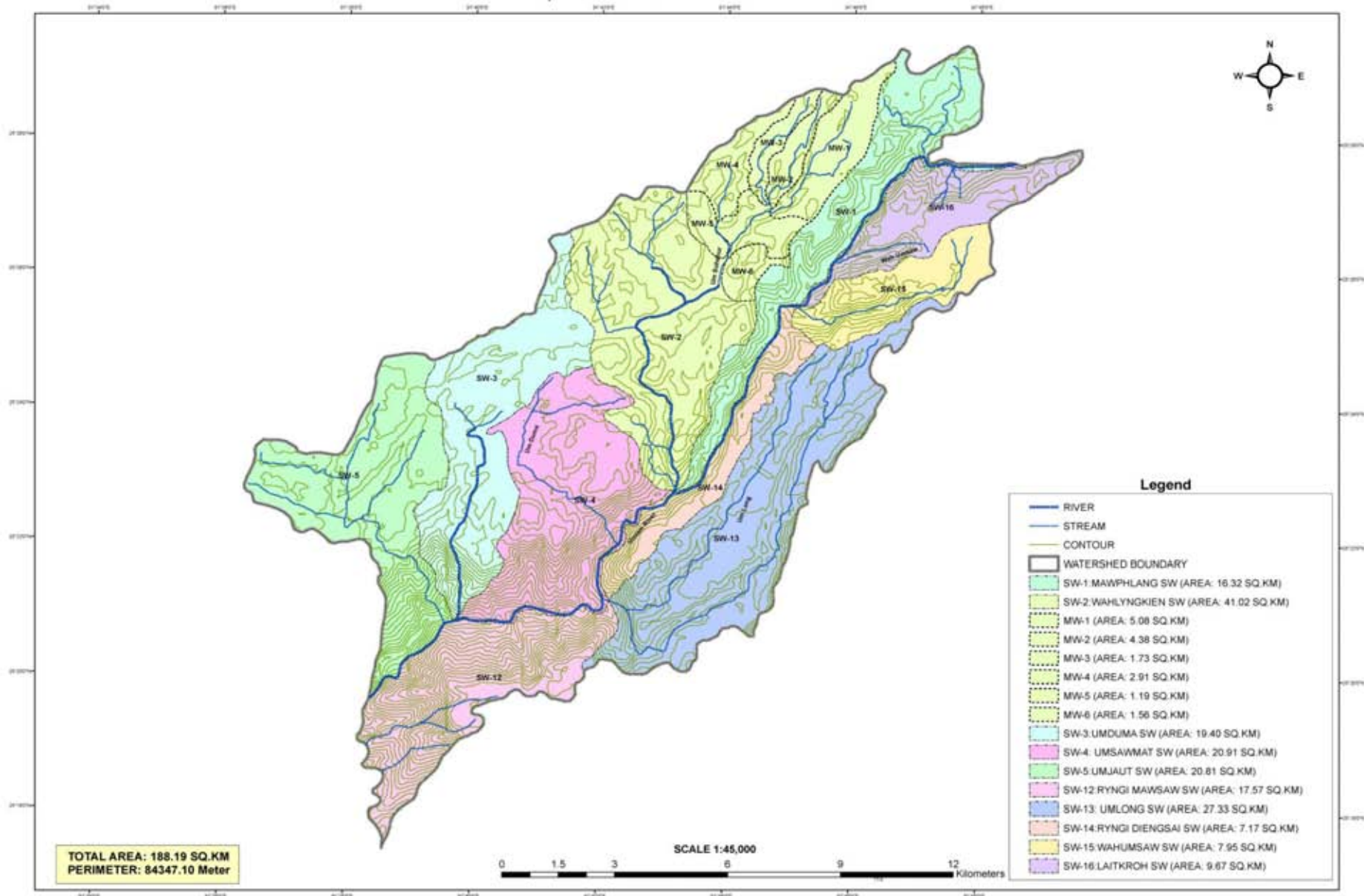
# Khasi Hills, Meghalaya



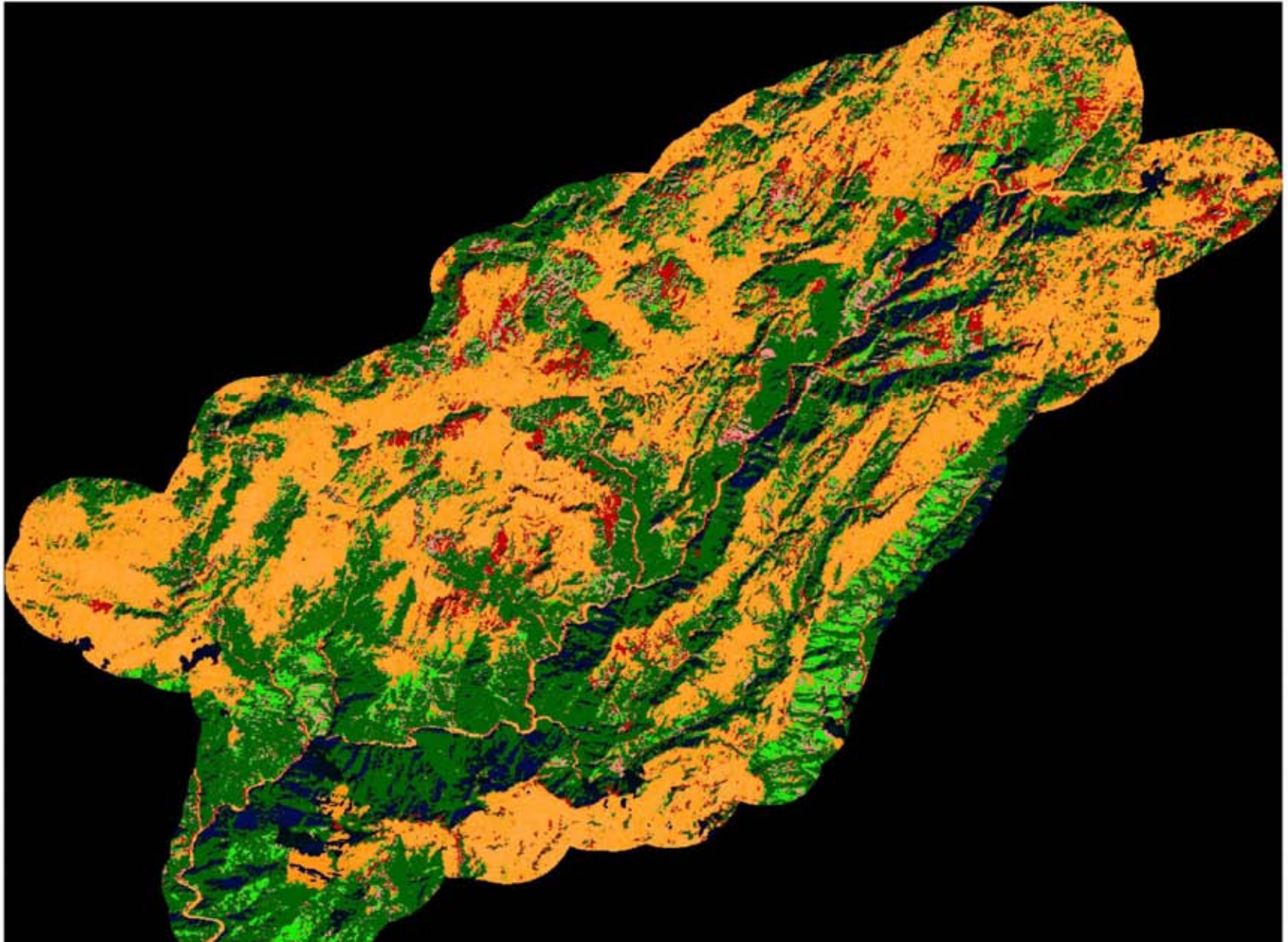
# Forest Cover Change of East Khasi Hills District, Meghalaya: 2001 - 2007

Year	Geographic Area (Km <sup>2</sup> )	Dense Forest (Km <sup>2</sup> )	Open Forest (Km <sup>2</sup> )	Total Forest (Km <sup>2</sup> )
2001	2,820	997	1,553	2,550
2007	2,820	1235	844	2079
Annual Loss	-	-	-	3.08%

**MAP OF CLIMATE ADAPTATION AREA OF UMIAM SUB-WATERSHED, KHASI HILLS, MEGHALAYA,  
NORTH EAST INDIA, SHOWING TOPOGRAPHY & DRAINAGE SYSTEM**



# Forest Cover Change 1990-2010



# Project Overview

Total Project Area = 17,052 ha

- Total Forest Cover = 8106 ha, of which 3652 ha is Dense forest and 4454 ha is Open forest
- The Net CO2 additionality per year on account of Avoided Deforestation and Degradation and Afforestation in the Project Area works out as under:
- Gross 27,246 mt. CO2

Reduction at 60% level of Gross	16,348 mt. CO2
Subtract Leakage 30%	4904 mt. CO2
Net CO2	11,444 mt. CO2

# Project Design Process

- The time line of the processes that influenced the design activities stipulated in the Project were as under:

**2002 – 2004: Project Identification Phase – Social Appraisal through intensive Case Studies of selected areas in all the North Eastern States. Formation of a Community Forestry Working Group for North East India and the Selection of 2 villages in Hima Mawphlang, East Khasi Hills for Payment for Environmental Services (PES) Pilot Project implementation.**

**2005 - 2006: Project Design Phase – Based on dialogue with indigenous inhabitants, the main drivers of deforestation were identified and mitigation activities agreed upon in a Conservation Resolution adopted by the Community members.**

**2007 – 2009: Project Implementation Phase – Based on the Identified Drivers of Deforestation and degradation and required Mitigation Activities, a Forest Landscape Restoration Scheme (FLRS) was drawn up for implementation in Lyngkien Sunei and Lyngkien Ramklang villages of Hima Mawphlang. The Project covered an area of 1198.64 ha.**

**2010 - : Data collection and preparation of a Draft Khasi Hills Community Forestry REDD Project – Search for Early Implementation Financing.**

# The main Drivers of Deforestation and Degradation and Mitigating measures undertaken to protect forests and biodiversity:

## Main Drivers

- Forest Fires
- Fuelwood collection
- Quarrying
- Grazing
  
- Erosion & loss of biomass
  
- Destruction of endangered species habitat

## Mitigating Measures

- FireLines/Watchers
- Fuel efficient stoves
- Total ban
- Animal exchange & Stall feeding
- Vegetative check dams & afforestation
- Rehabilitation & protection of habitats of rare orchids & amphibians

# Firelines



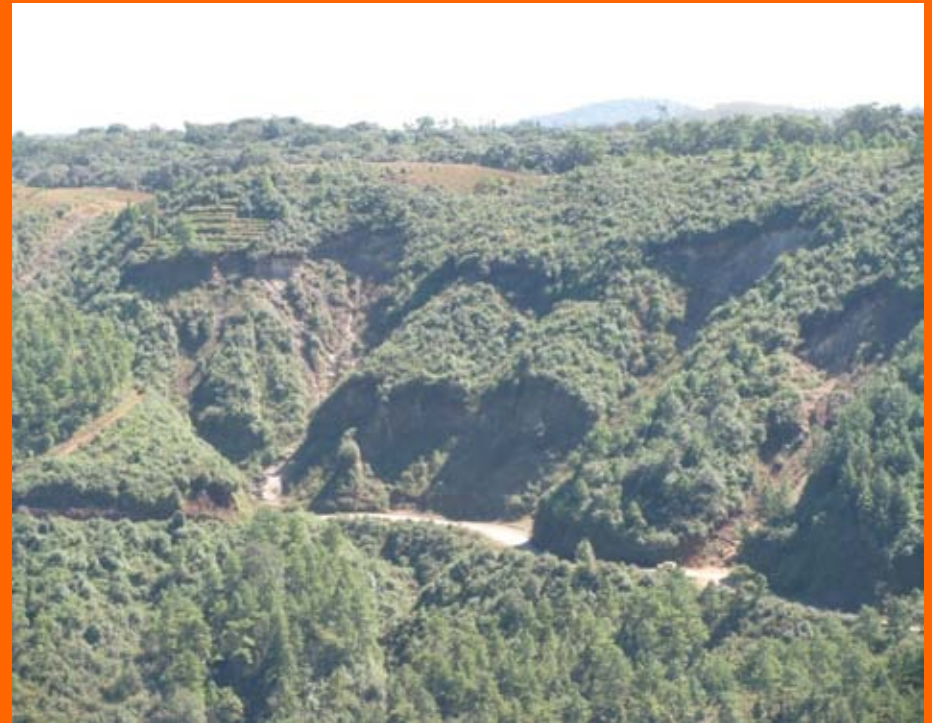
# Smokeless, Fuel-Efficient Stoves



# Banned Quarry Site



BEFORE (2007)



AFTER (2009)

# Stall-Fed Pig Raising



# Stall Fed – Chicken Rearing



# Assisted Natural Regeneration



BEFORE (2007)



AFTER (2009)

# Artificially Created Amphibian Habitat



Wind Fallen Branch containing 6 different spp of orchids and 5 different fern Spp



# Rehabilitated Epiphytes



# Community training, project technician start writing Plan Vivo with community and evaluating their viability



# Past Project Financing

- Small grants from MacArthur Foundation 2005-2010
- Major expenses include:
  - CFANE Administrative and Technical support office
  - Contracts with community organizers
  - Contracts with Lower Working Committee (LWC)
  - Contracts with support NGOs for micro-finance training, extension activities
  - Award Payments to Project Communities

## Meetings with KHADC & Govt. Officials

- Khasi Hill Autonomous District Council has approved the Project Proposal
- Chief Secretary to the Meghalaya Govt. also approved the approach

# Plan Vivo

## What is Plan Vivo?

- Plan Vivo is a certification and development framework for community-led land-use projects and programmes.
- Projects support communities to improve their livelihoods, reduce poverty and conserve and restore local ecosystems.

## What do Plan Vivo projects do?

- In each project, an in-country project coordinator (project developer and manager) acts as a support centre and aggregator.
- The project coordinator helps smallholders and community groups to write management plans (***plan vivos***) for sustainable land-use activities

# Characteristic plan of Vivo Approach

- **Based on Bottom-up Experience.** Plan Vivo was initially conceived in 1994 to connect poor forest dependent and farming communities farmers to carbon markets and financing. Plan Vivo's approach based on experiences from 13 countries.
- **Participants work together at a landscape level**
- **Projects scale-up and improve over time**
- **Implemented by Communities**
- **Activities are designed to have long-term value.**
- **Long-term payments for ecosystem services (PES) provide continued incentives.**

# Monitoring & Payments

- **Independent certification and registry**  
Environmental registry with unique serial numbers
- **Pooled risk buffer:** CO2 benefits are secured by the Plan Vivo risk buffer
- **Poverty reduction and benefit-sharing:**  
Plan Vivo is the only standard to require direct payments to communities
- **Biodiversity and other ecosystem benefits:**
- Plan Vivo is the only standard where planting is always limited to indigenous species

# Plan Vivo Contact Information

- **Contact Us**
- [www.planvivo.org](http://www.planvivo.org) [info@planvivoofoundation.org](mailto:info@planvivoofoundation.org)
- **Plan Vivo Foundation**
- 18b Liberton Brae
- Edinburgh, Scotland Tel: +44(0)131 672 3782
- *The Plan Vivo Foundation is a charity registered in*
- *Scotland, number SC040151*

# Write and submit Project Idea Note (PIN) to Plan Vivo Foundation for registration

Project Identification Note  
for the  
Umiam Sub-watershed REDD+ Project  
East Khasi Hills District  
Meghalaya, India



Community Forestry Alliance  
North East (CFANE)

Khasi Hills  
Autonomous  
District Council

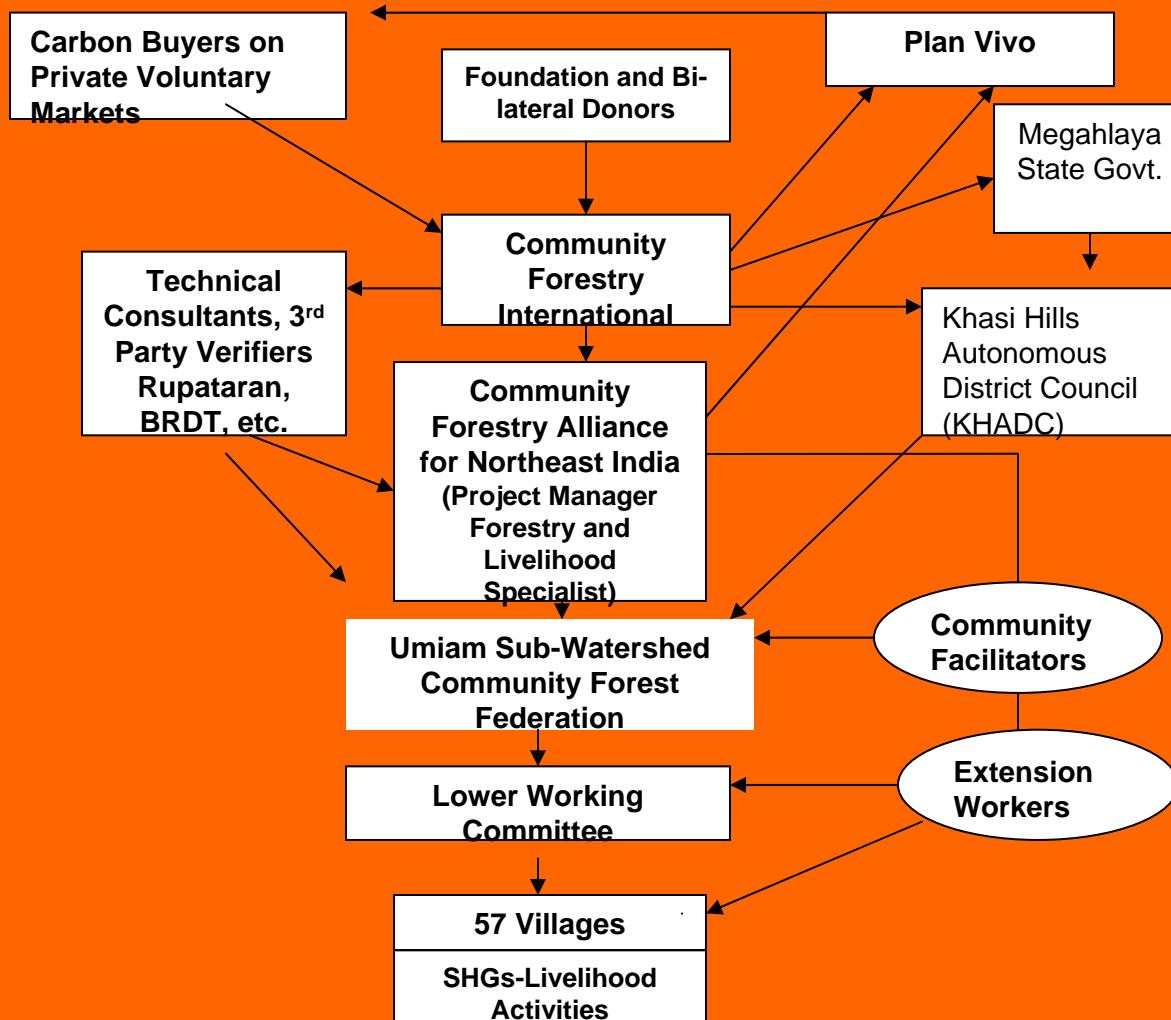
SYNJUK  
Umiam Sub-watershed  
Community Forestry  
Federation



Submitted to Plan Vivo  
May16, 2011

# Define project role and responsibilities

Governance Structure: Early Implementation  
Umiam Sub-watershed REDD Project, Meghalaya, India



# Stages of Plan Vivo Project Development & Registration



# Tasks Remaining

- Set up Project Fund and database
- Write & Submit Project Design Document (PDD) to Plan Vivo Foundation

THANK YOU